

M.V. MASHHOR PRINCESS

85M MAINTENANCE/WORKING VESSEL (238 Men Accom/ 100 MT crane)



General

Flag: Malaysia
 Port of Registry: Port Kelang
 IMO No: 9708409
 Call Sign: 9MWY6
 Where Built: Jiangsu Zhenjiang Shipyard (Group) Co.Ltd
 Year Built: 2015 Completed
 Length OA: 85.00 m
 Breadth Moulded: 23.00 m
 Depth Moulded: 8.00 m
 Draft (Minimum): 5.00 m
 Draft (Design): 6.20 m
 Gross Tonnage: 6464
 Net Tonnage: 1939
 Deadweight: About 3,800t
 Classification: RINA C+ OFFSHORE SUPPORT VESSEL
 FIRE FIGHTING SHIP 1, UNRESTRICTED
 NAVIGATION, AUT-UMS, DYNAPOS-DP2
 HELIDECK,

Machinery

Main Engines: 2 X 3000HP @750rpm c/w PTO for fire pump
 Azimuth Propeller & Shaft: 2 x 3000HP input power, CPP type
 Bow Thruster & VFD starter: 2 x 12ton, CPP type, electric motor driven
 1 x 500-600kW VFD starter for two bow Thrusters.
 Main generating set: 5 x 715kW, 440V/3P/60Hz
 Emergency diesel generator: 1 x 200kW, 440V 3P / 60Hz

Deck Equipment

Main Crane: SWL 100T. Power pack (Diesel engine)
 Man Riding with Client supplied PTB
 4-Point Mooring System: Drum Pull (1st Layer):
 40t x 0-10m/min (low speed),
 10t x 0-30m/min (high speed)
 Drum Capacity: 1500m, Dia.42m wire
 10ton at 9m/min for 50mm chain.
 Anchor Windlass: 10ton at 9m/min for 50mm chain.
 Capstan: 2 x 5ton @ 15m/min
 Tugger Winch: 2 x 10ton @ 12m/min
 Gangway: For jetty use only 6 mtrs aluminium type
 DP2: MARINE TECHNOLOGIES NORWAY
 HIPAP Valve: Valve type: Gate valve.
 Gate valve flange: 500mm
 Incinerator: 180000Kcal/h

Tank Capacity

Fresh water: 1200 m³
 Fuel oil: 1800 m³ (incl. cargo FO less than 1000 m³)
 Water ballast (incl.DW): 2500 m³
 Drill water: 2150 m³
 Foam: 10 m³
 Sewage Holding: 50 m³
 Dirty oil: 15 m³
 Bilge: 30 m³

Wooden deck space: Abt. 700 m², design load 7.5t/m²

Freshwater maker & UV 2 x 50t/day with UV sterilizer

Sewage treatment plant: 240 persons

Safety Equipment

Life Boat: 2 x 120 men life boat c/w side launching Davit
 Fast Rescue Boat: 2 x 6 men diesel-water jet boat c/w single Arm davit
 External Fire-fighting: FiFi1 pumps 2 x 1850m³/h@125m
 Monitors 2 xx 1200m³/h (one of them is Dual barrel water/foam)

Navigation & Communication

Navigation & communication equipment for GMDSS A3.
 Auto-pilot, Gyro-compass, Magnetic compass, radars, echo-sounder, speed log,
 Electronic chart, 2 x DGPS, navigation lights

Helideck System: Helideck pancake made from Aluminium
 Landing net
 Foam system
 Fire extinguisher
 Fireman's equipment
 Helideck lighting system
 Helideck status light system
 Helideck crash equipment locker

Speed

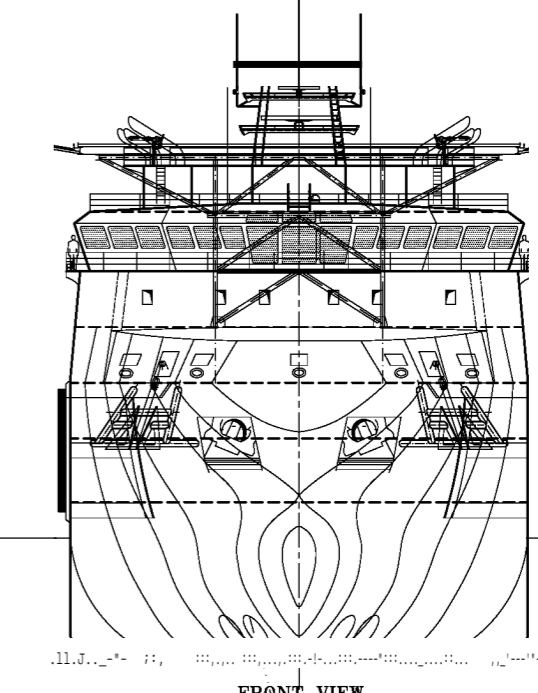
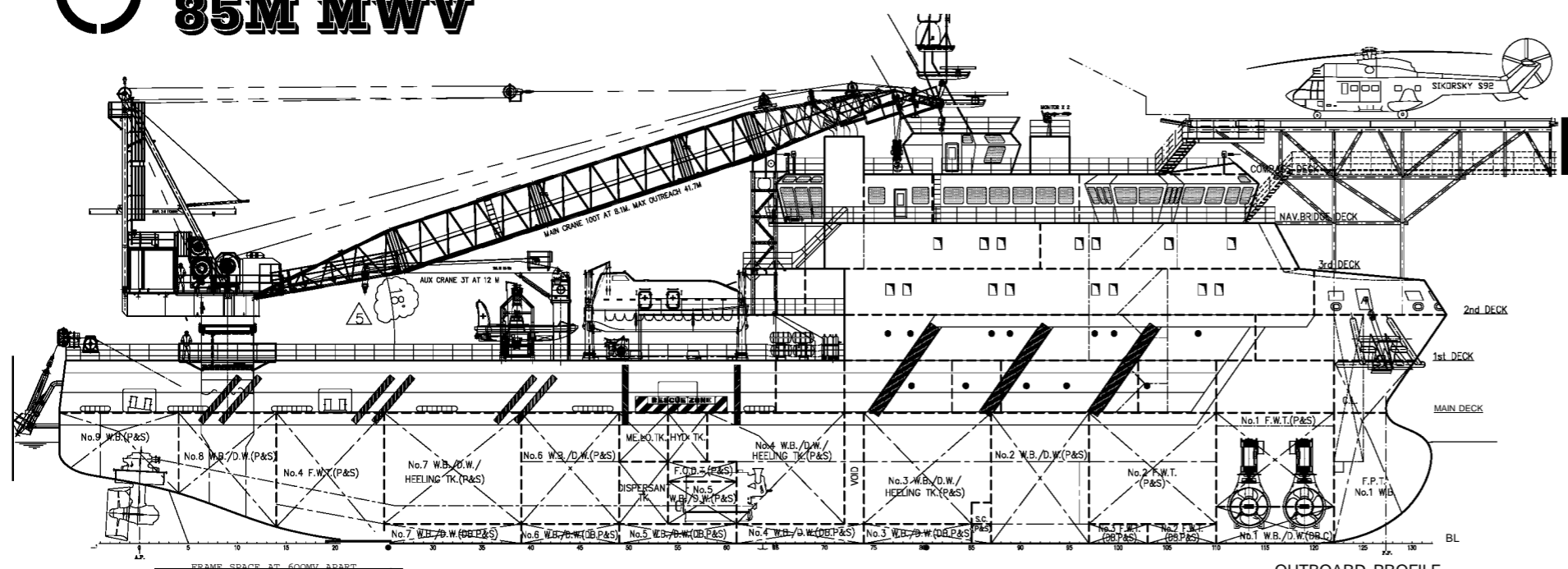
Trial Speed: 11 knots at trial condition, 100%MCR, at 4.8m Draft and sea state two (2)

Accommodation

8 x 1-berth cabins: 8 men
 9 x 2-berth cabins: 18 men
 53 x 4-berth cabins: 212 men
 Total: 238 men

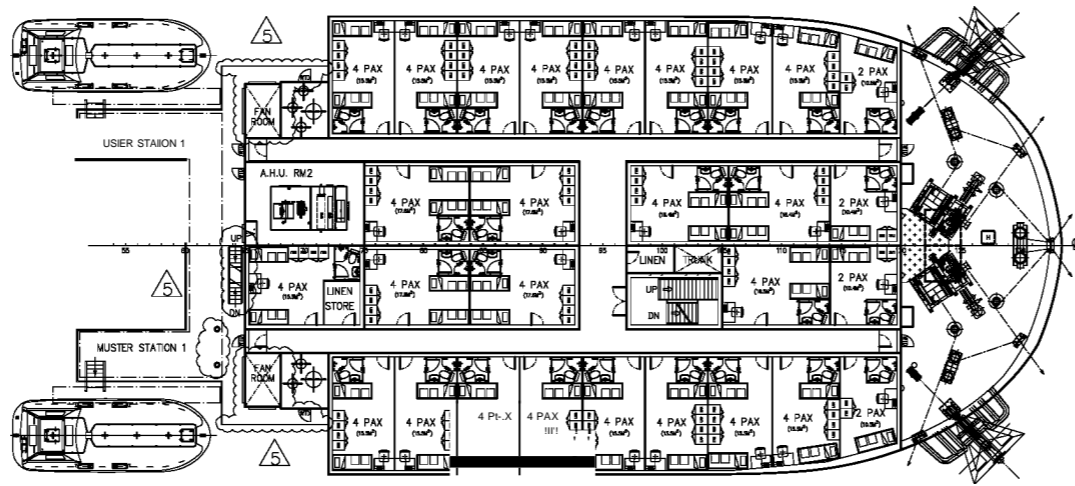
Particulars given are entirely without warranty as to correctness and interested parties must satisfy themselves by inspection of the vessel

FOCAL 527 85M MWV

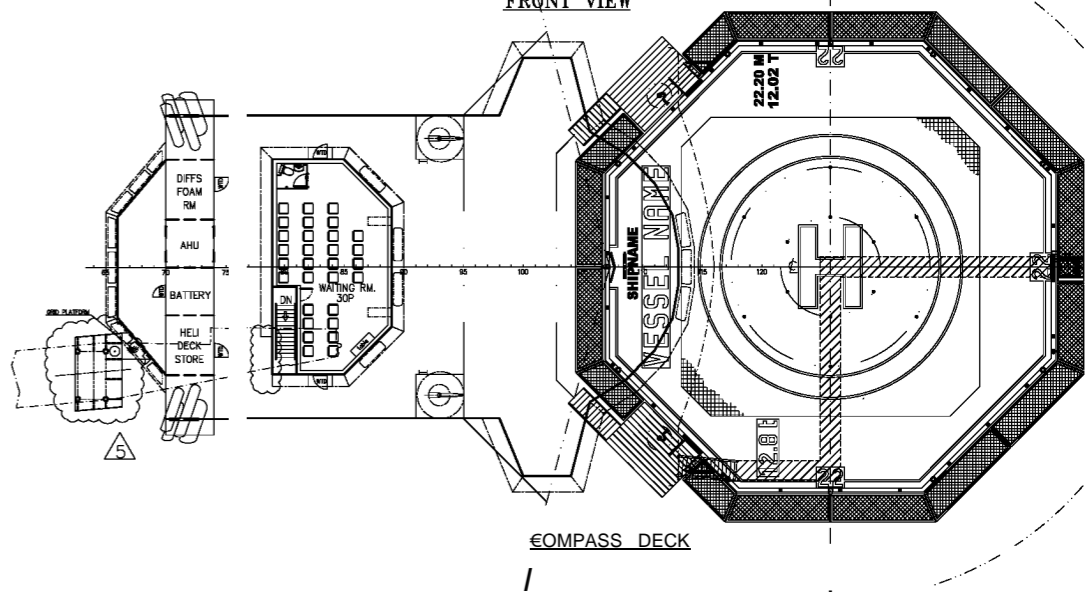


PRINCIPAL PARTICULARS

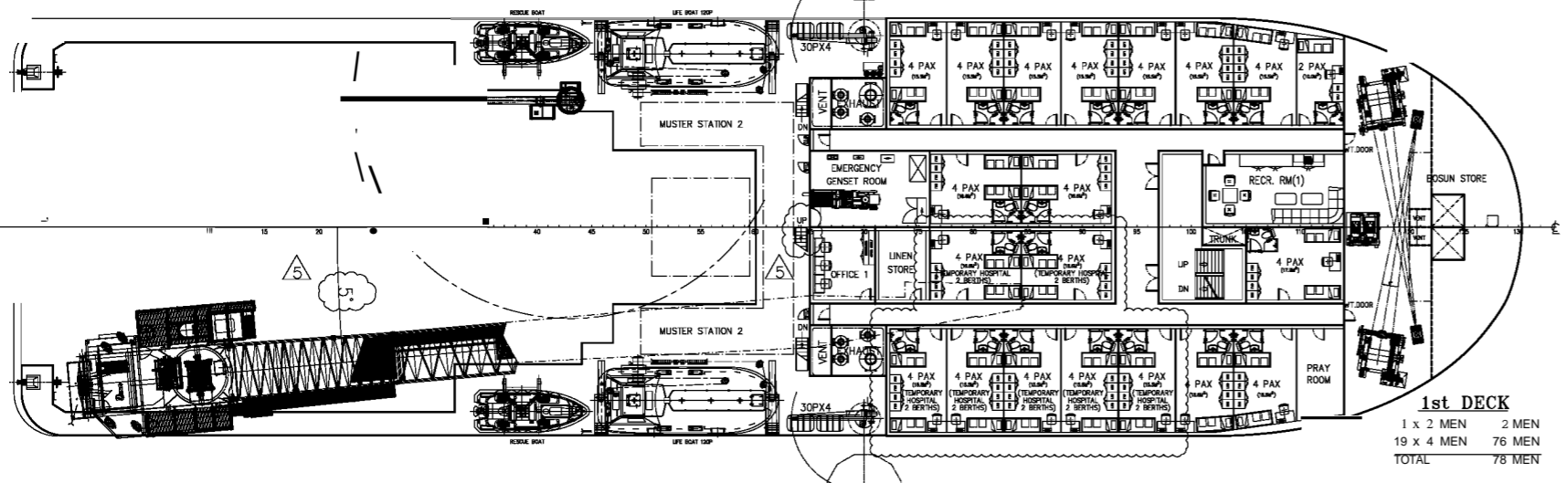
LENGTH OA	85.00 M
LENGTH BP	76.40 M
BEAM MLD.	23.00 M
DEPTH MLD.	8.00 M
DRAFT DESIGNED	6.00 M
DRAFT SCANTLING	6.20 M
COMPLEMENT	238 MEN
F.O.	1,800 M ³
F.W.	1,200 M ³
W.B.(INCL.D.W.)	2,500 M ³
D.W.	2,150 M ³
WORKING DK SPACE	900 M ²
MAIN ENGINE	2,206 KW X 2
TRIAL SPEED	11.0 KTS



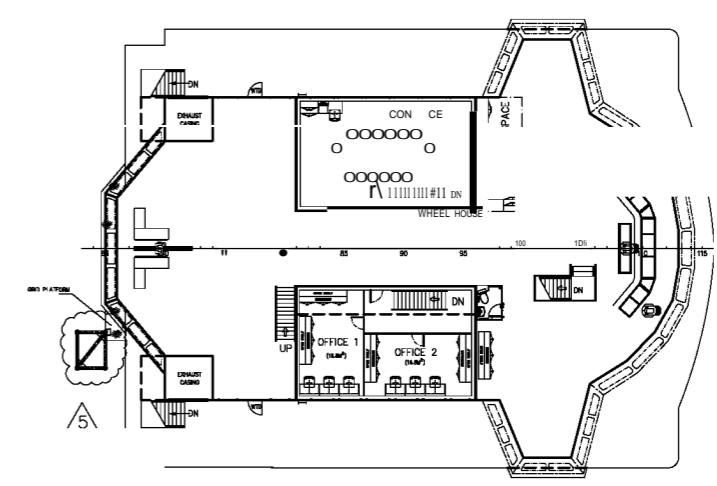
2nd DECK
4 x 2 MEN = 8 MEN
24 x 4 MEN = 96 MEN
TOTAL = 104 MEN



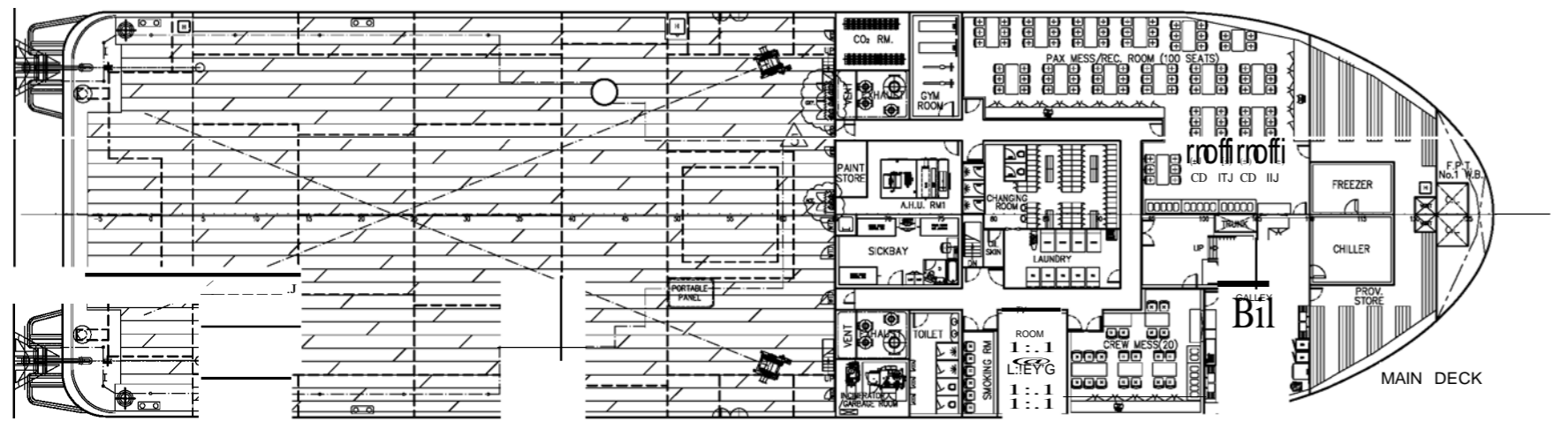
COMPASS DECK



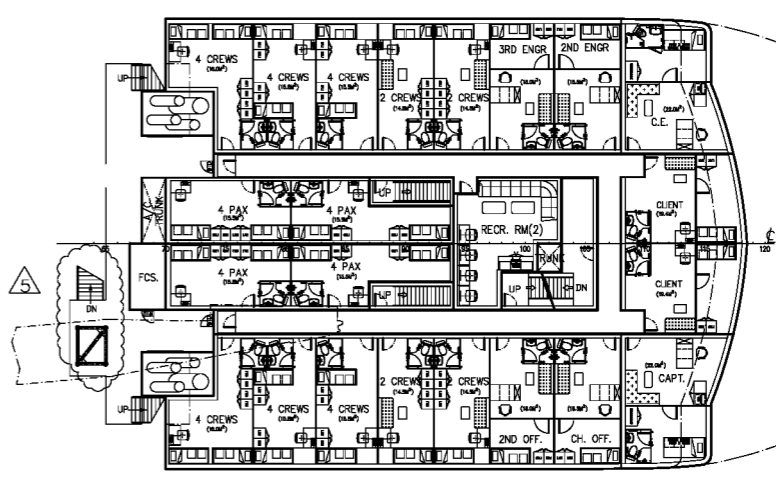
1st DECK
1 x 2 MEN = 2 MEN
19 x 4 MEN = 76 MEN
TOTAL = 78 MEN



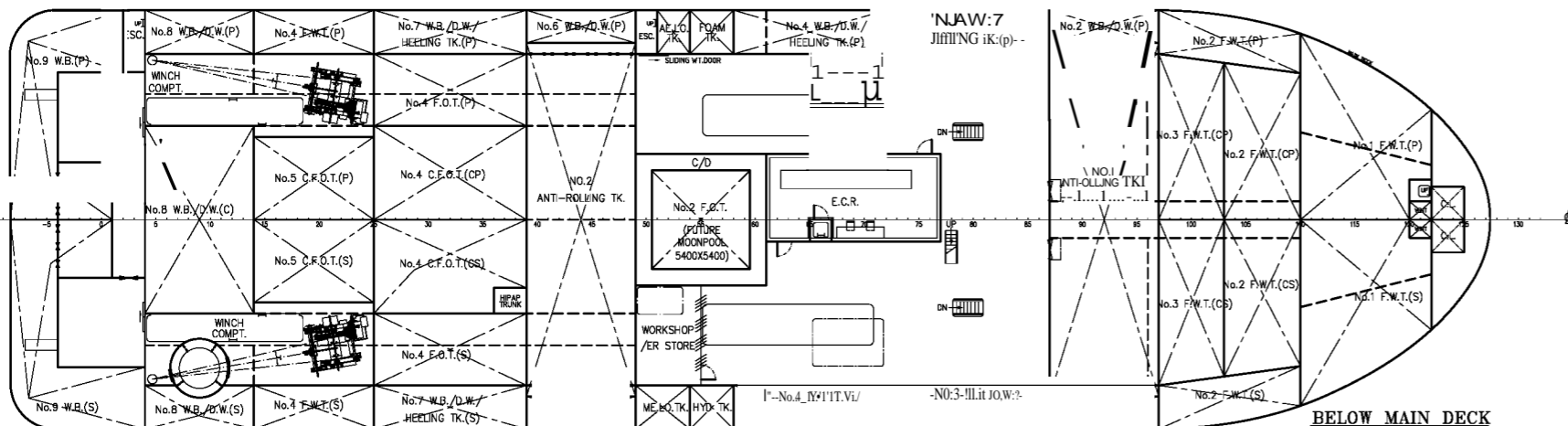
NAV BRIDGE DECK



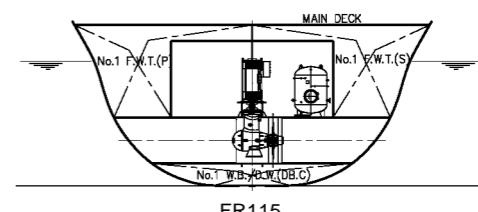
MAIN DECK



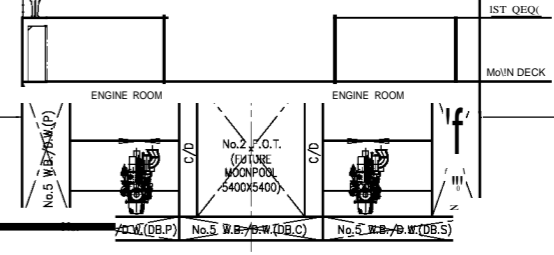
3rd DECK
8 x 1 MEN = 8 MEN
4 x 2 MEN = 8 MEN
10 x 4 MEN = 40 MEN
TOTAL = 56 MEN



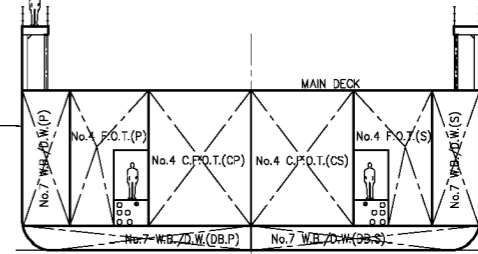
BELOW MAIN DECK



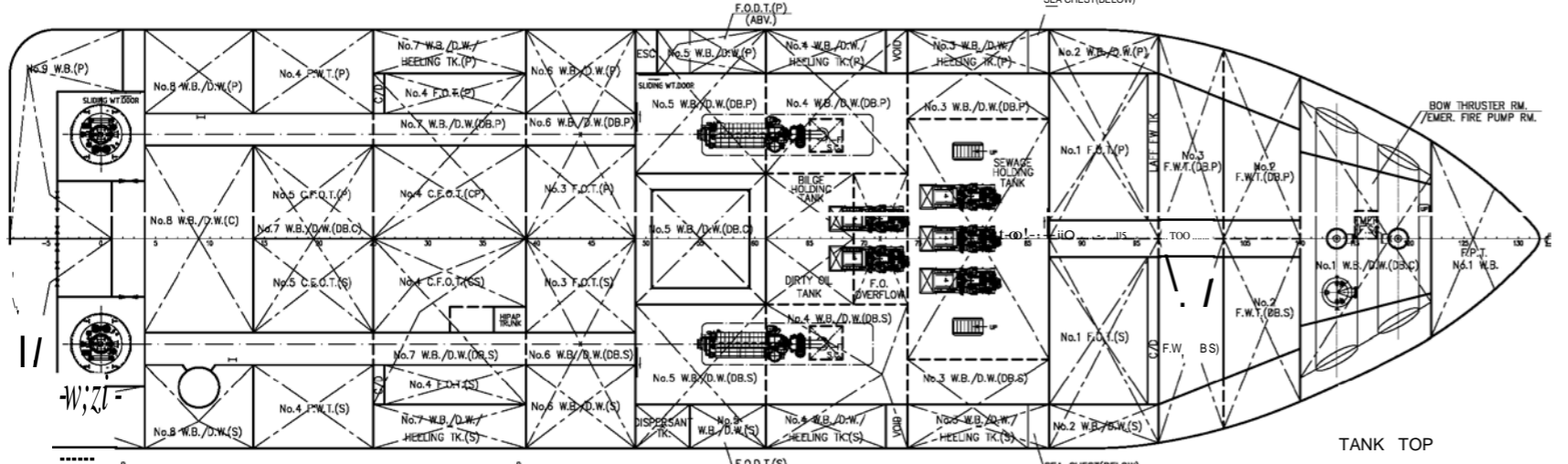
FR115



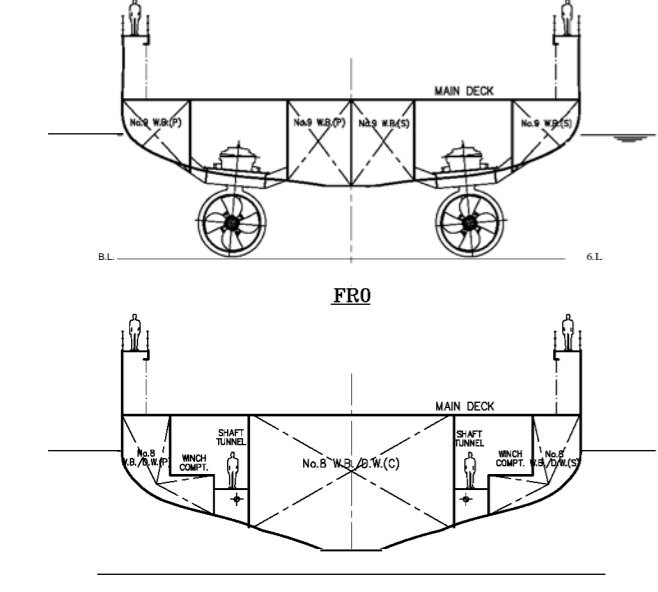
FR55



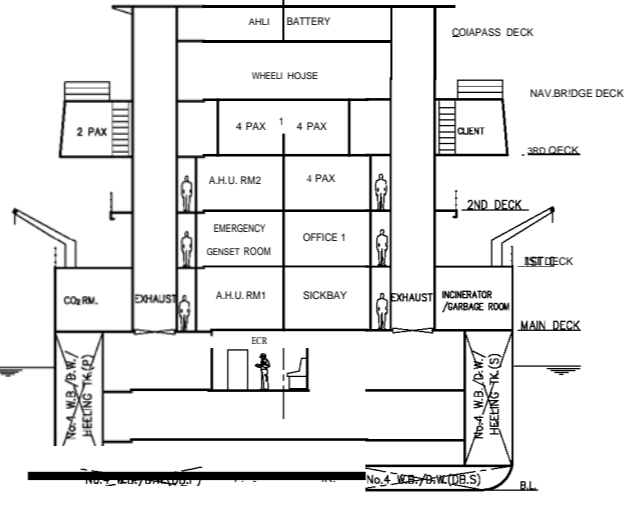
FR33



TANK TOP



FR0



FR70

ISSUED FOR APPROVAL

- CLASS: ABS IIA1 (I) OFFSHORE SUPPORT VESSEL
- FFV 1
 - SPS
 - III DPS-2
 - Accu
 - IIIAVIS
 - BWT
 - UWILD
 - CR
 - GP
 - MLC-ACCOM
 - HELIDK

THIS DOCUMENT AND THE CONTENT ARE COPYRIGHT AND REMAIN PROPERTY OF FOCAL MARINE & OFFSHORE. THEY MUST NOT BE COPIED IN WHOLE OR IN PART TO ANY THIRD PARTY FOR ANY PURPOSE WITHOUT PRIOR WRITTEN PERMISSION FROM FOCAL MARINE & OFFSHORE. THE RECEIPT OF THIS DOCUMENT IMPLIES ACCEPTANCE OF THIS CONDITION.

5	AMENDED AS PER YARD/OWNER/ABS COMMENTS	N.K.	AUG-21-2014
4b	AMENDED AS PER YARD/OWNER COMMENTS	N.K.	JAN-10-2014
4a	AMENDED AS PER DESIGN PROGRESS	N.K.	JAN-10-2014
REV NO.	REVISION DESCRIPTION	BY	DATE
OWNER SAL MARTIME PTE LTD			
BUILDER JIANGSU ZHENJIANG SHIPYARD (GROUP) CO., LTD HULL NO.: VZJ5279-1301			
PROJECT 85,1 MAINTENANCE / WORKING VESSEL "FOCAL 527"			
APPROVE	DWG TITLE:	JOB NO.: P-1648	
VERIFY	GENERAL ARRANGEMENT	DWG NO.: P-1648-G01	
CHECKER		SCALE: 1:25D (A1)	
JRAWER		CLASS: ABS	
FOCAL MARINE & OFFSHORE EMail: info@focalmarine.com			
SHANGHAI TEL: 86-21-58705786		SINGAPORE TEL: 65-68481371	
FAX: 86-21-50313265		FAX: 65-68481291	